

PLUGGED IN

MOUNTAIN PARKS ELECTRIC, INC.

IMPROVING GRID RESILIENCE

Two important grant-supported projects to improve MPE's grid resilience are progressing and are scheduled for completion late this summer.

These projects will also help mitigate fires starting due to electrical sparks, trees falling on power lines, and wildlife interference with powerline equipment.

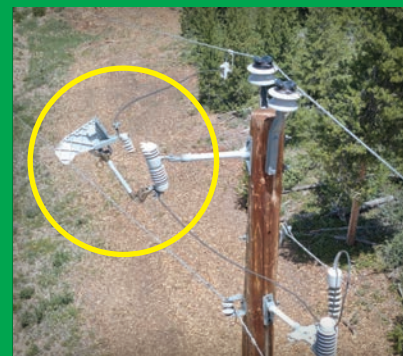
Michels was selected as the contractor through a competitive bid process for MPE's grid hardening projects – North Shore and Drowsy Water. Grant funding through the Colorado Energy Office (CEO) from the Department of Energy (DOE) will provide MPE with just over \$700,000, which allows MPE to pair this funding with scheduled work plan dollars to complete these much-needed mitigation projects.



Michels has completed over half of the rebuild for the North Shore project off Highway 34 between Granby and Grand Lake. The Drowsy Water overhead-to-underground conversion between Granby and Hot Sulphur Springs is also moving forward as planned. Nearly all underground infrastructure has been installed, and the project is expected to be fully completed within the next 5 to 6 weeks. MPE staff has also secured an additional \$8.7 million in grant funding from the Department of Homeland Security & Emergency Management for an additional seven areas of grid hardening/fire mitigation work plan projects across MPE's service territory, which otherwise would have taken years to fund and complete.

Story continued on page 2.

Critical anomalies detected by drone pilot



A broken porcelain cutout was photographed on Ten Creek Road east of Granby by a SAM drone pilot, recognized by a SAM inspector, and sent immediately on July 16 to the Operations Department at MPE.



A crew was dispatched that afternoon and Journeyman Lineman Isiah Herod, pictured, and Troubleman Lineman Sheldon Greenwood replaced the cutout; a sectionalizing device that minimizes outages to the fewest number of members possible.

FIBER BUILDOUT UPDATE

Conexon Connect contractor MDR continues to replace power poles as a part of the preparatory work for Conexon Connect's fiber buildout to the home/business across MPE's service territory. The new poles, which are at the expense of Conexon Connect, provide ample spacing and support for the new fiber.

Below is a fiber project update from Conexon Connect:

"Conexon Connect is eagerly working on the fiber broadband network that will ultimately deliver world-class, high-speed internet to Mountain Parks Electric members! Although you may not see construction activity yet, please know that an extensive amount of planning, engineering, and permitting work is actively underway behind the scenes. Stay tuned for upcoming news and project updates. We sincerely appreciate your patience during this phase and are committed to bringing reliable, affordable broadband to your community."

If members have any questions about the upcoming high-speed internet, please contact Conexon Connect at 844-542-6663 or visit ConexonConnect.com.



Continued from cover. **MPE was awarded another CEO/DOE grant of nearly \$350,000 for advanced grid monitoring.**

The funds are helping provide MPE with a comprehensive aerial field survey for the 21,600 poles and more than 1,300 miles of MPE's distribution system. As of July 15, the certified drone pilots with SAM (Systems and Mapping) had captured images of around 8,760 poles and had professional inspectors examine around

4,585 poles. MPE is notified in real-time when SAM inspectors find what they deem a "critical anomaly," and MPE Operations responds by sending a crew out as quickly as possible for the repairs. As of July 15, there had been around 12 such finds reported and then repaired to prevent potential outages or further damage to the system. SAM anticipates project completion in mid-September. Members may hear or see the drones flying over the poles and overhead power lines and may notice return flights where crews may need to photograph and inspect poles not previously captured.

MPE was honored to host John Parks, Colorado Energy Office (CEO) Grid Resilience Program Manager, on June 30 for site visits to MPE's grid monitoring and grid hardening projects, as seen in the photo on the left. John expressed gratitude for the visit and was impressed with the scope of work and system improvements that these CEO projects are incorporating, highlighting them as strong examples of how strategic investment in rural grid resilience can enhance reliability, safety, and long-term sustainability.



MPE REBATE REMINDER

Revamp your residence or business with help from MPE! We offer a variety of rebates to help you go electric, save energy, and control your costs. Check out our rebates on items such as energy audits, heat tape timers, insulation, outdoor equipment, and EV chargers. mpei.com/rebates

It's a great time to buy an electric vehicle to make the most of soon expiring federal and state incentives! The \$7,500 federal tax credit will expire on September 30, and Colorado's credit will be reduced after the first of the year. To help you electrify, Mountain Parks offers up to a \$750 rebate on the cost of installation of an EV charger. Visit mpei.com/rebates for details.



EV RIDE & DRIVE
SEPTEMBER 20

9 a.m. – 1 p.m.
Snow Mountain Ranch
MPEI.com/Events

BOARD MEETING DONATIONS

At the July Board Meeting, the board approved donations for the North Park Pioneer Museum in Walden and the new bike park being constructed by the Town of Fraser.

A \$25,000 donation to the Pioneer Museum will go toward preservation and promotion of the cultural and historical heritage of North Park through the digitization of artifacts and the enhancement of exhibit lighting. Funding of the donation will be between the Unclaimed Capital Credits Fund – \$10,000 for the digitization project – and from the Clean Power Program – \$15,000 for the LED lighting upgrades. Museum representatives feel the upgrades will reinforce the museum's position as a cornerstone of Jackson County's identity and a growing summer tourist destination for visitors.

A commitment of \$25,000 annually over 3 years for the Presenting Sponsorship of the Fraser Bike Park will go toward construction costs. Funding will be split between the MPE's Unclaimed Capital Credits Fund and community sponsorship funds from MPE's new power provider, Guzman Energy. The free and accessible bike park will be in the Cozens Ranch Open Space adjacent to the Lions Pond. It will be a place for the community to gather and for recreation, as well as skill building and youth development.

The next time the board will review donation requests will be at the November 13, 2025, Board Meeting. Donation request submissions for that review are due by October 23. See www.MPEI.com/donation-request for the application form.



Fraser Bike Park groundbreaking ceremony, July 22, 2025



MEMBER APPRECIATION

SAVE THE DATE

WEDNESDAY **SEPT. 3**

Troubleman Lineman Quintin Bradford stretches out to install wind dampeners on MPE's fiber northwest of Kremmling. Wind dampeners help keep the lines from bouncing in wind or ice. Such bouncing can cause a power outage. This is one of many areas inaccessible by the line trucks, meaning the linemen have to climb the poles for upgrades or repairs. Also on the scene were Apprentice Lineman Bryce Poppe and Journeyman Lineman Isiah Herod.

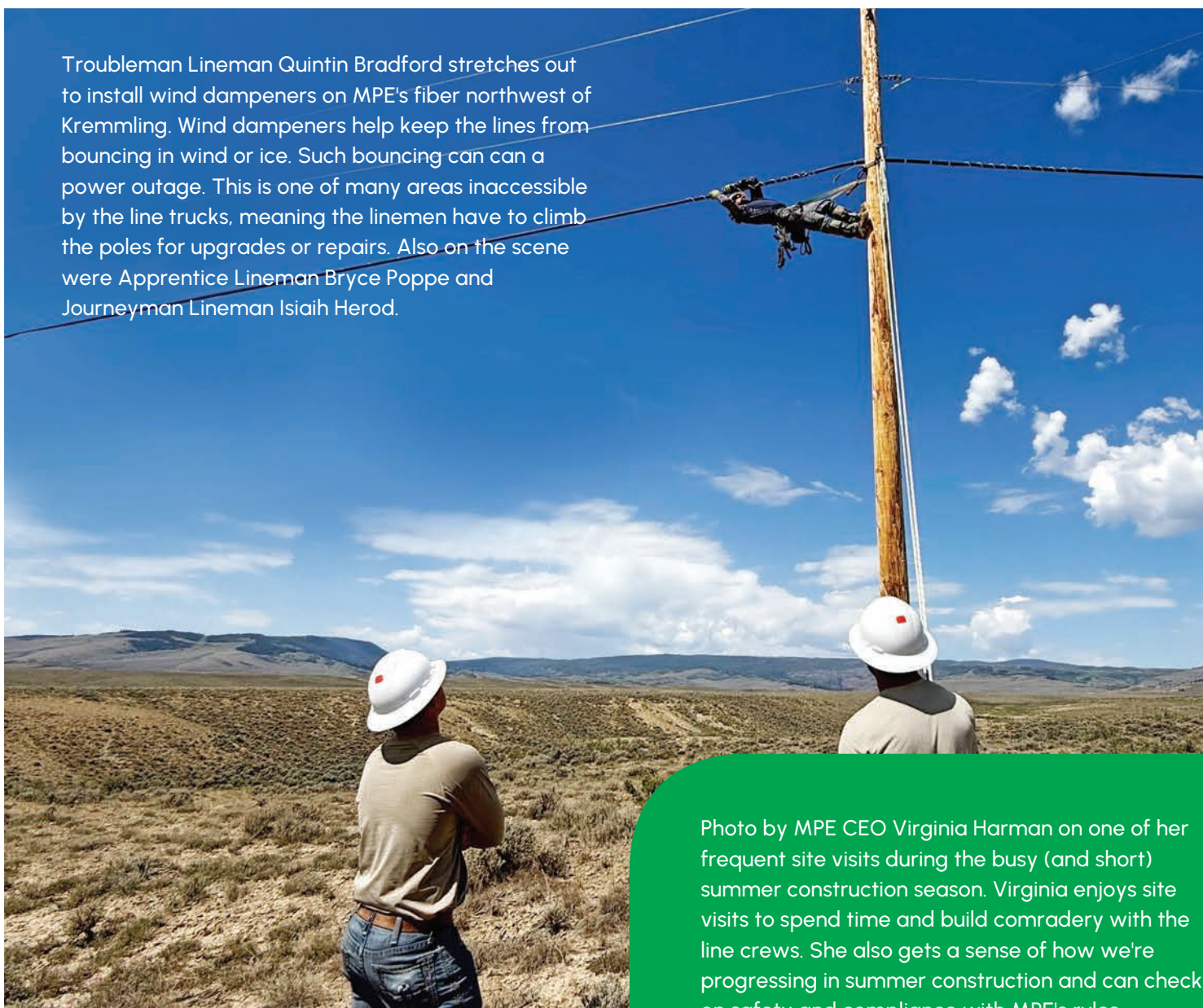


Photo by MPE CEO Virginia Harman on one of her frequent site visits during the busy (and short) summer construction season. Virginia enjoys site visits to spend time and build comradery with the line crews. She also gets a sense of how we're progressing in summer construction and can check on safety and compliance with MPE's rules.